



UNIQUE TECH

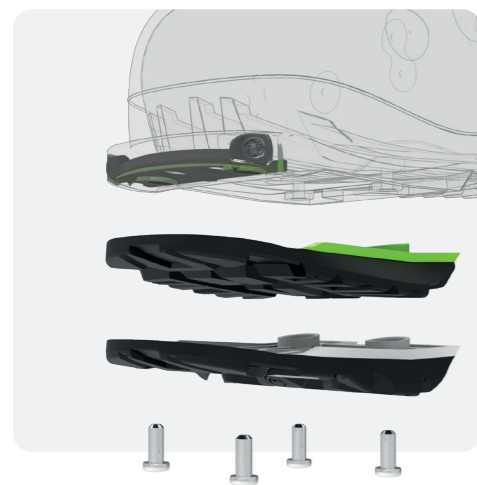
Roxa is well known as an innovator.

We hold several patents and are constantly shaking up the status-quo of ski boot design.



NEXT GEN DESIGN

Utilizing state of the art **CAD design** technology, **3D printed prototyping**, and cutting edge polymers, Roxa's revolutionary "Next Generation", Cabrio R3 and R/Fit technology provides skiers with the **lightest collection of alpine ski boots ever offered.**



Integrated Tech inserts

Roxa owns the **patent for fully integrated tech inserts**, combined with **interchangeable soles.**

Roxa models with tech inserts fitted with GripWalk soles can also accept Vibram® touring norm soles or flat alpine soles for unlimited use and versatility with no compromise in performance.

MATERIALS

Roxa only uses state of the art polymers such as **Grilamid®** and **Desmopan 900®** for the majority of the range. These polymers are the **finest materials available in ski boot design** in terms of performance, weight, durability and being least effected by cold temperatures.



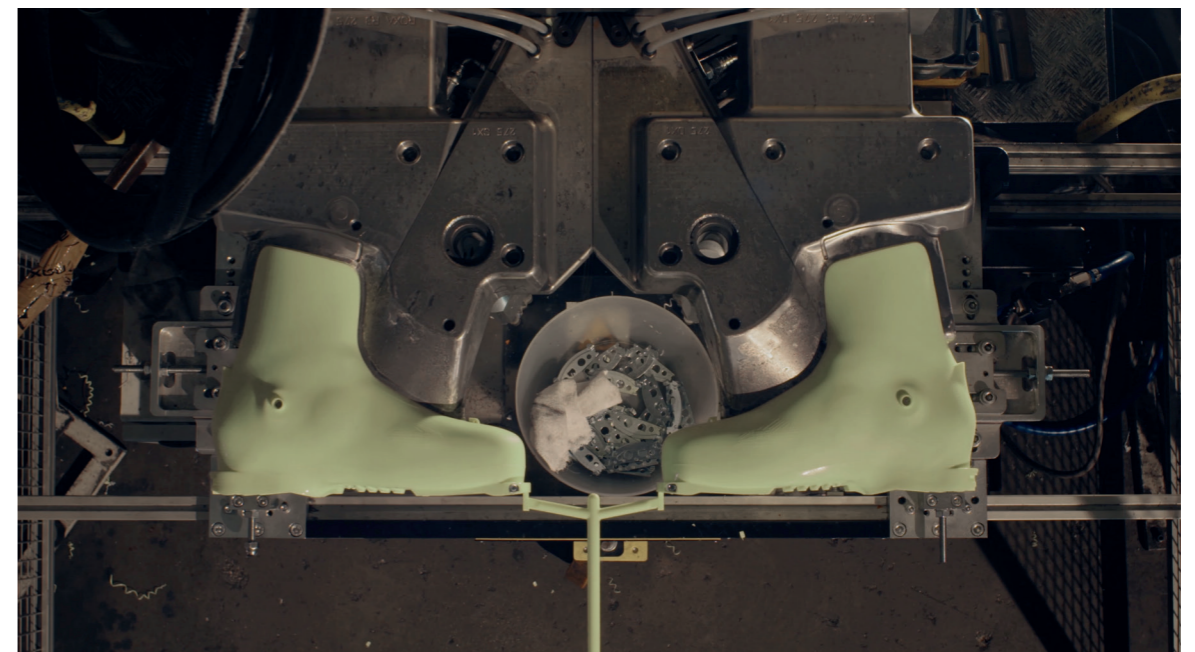
Grilamid®

Best in Class technical polymers. Grilamid is Ultra-lightweight, durable and almost unaffected by cold temperature.



DESMOPAN 900®

Engineering grade polyurethane (**PU+**) designed specifically for cold weather application, excellent molding properties.



3 PIECE CABRIO

FEEL THE INNOVATION

This unique technology combines a 3 piece construction: Shell, Cuff and Tongue.

- 1. Shell
- 2. Cuff
- 3. Tongue



Benefit
PROGRESSIVE FLEX
QUICK REBOUND
VERSATILITY

Roxa's cabrio models offer **hike cuff and fixed cuff** variations, comfortably secures the foot and lower leg while **optimizing smooth and progressive flexibility.**

Cabrio key features



HIGH SHELL WALLS

Tenacious lateral power and control without making the boot overly stiff forward.



POLYAMID TONGUE

Delivers smooth forward flex with quick rebound. Maintains contact with the skier's leg throughout the turn and provides excellent shock absorption.



OPEN THROAT SHELL

Accommodates a high range of hike function without compromising performance. Allows easy entry and exit.

2 PIECE OVERLAP

REIMAGINE THE TRADITION

Next Gen 2-piece design reimagines the traditional architecture, composed by Shell and Cuff.

- 1. Shell
- 2. Cuff



Benefit
 The R/Fit MV and R/Fit series offers skiers of all abilities and foot shapes the absolute state-of-the-art.

POWER AND PRECISION
COMFORTABLE FIT
LIGHTWEIGHT

Overlap key features



NEXT GEN STRUCTURE

3D CAD engineered **ultralight** while maintaining **incredible structural strength.**



DIRECT TRANSMISSION

The modern stance geometry and flex pattern provide **power, control and excellent edge hold.**



EASY ENTRY

Soft polyurethane panel insert at the instep allows for smooth, easy entry and exit.

BIOFIT SYSTEM

WHAT IS BIOFIT

Anatomic last shaping with pre-molded relief in the most common fit "issue" areas:

- Navicular
- Ankle bones
- 1st Metatarsal
- 6th Toe

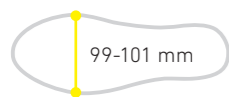


BIOFIT LAST WIDTHS

Precise Fit 99-101 mm BioFit

Precise fitting, anatomic fit for discerning high performance skiers.

Used in:
R3 Element



Tapered Fit 100-102 mm BioFit

Anatomic 100 mm last with a tapered fit in the mid and forefoot area.

Used in:
R/Fit MV



Relaxed Fit 102-104 mm BioFit

Anatomic 102-104 mm last with an emphasis on a user-friendly fit in the mid and forefoot area.

Used in:
R/Fit R/Fit Hike



BIOFIT CM (Custom moldable)

Fast, easy process allows for heat customization in minutes using a typical boot oven.

All BioFit shells (Grilamid and PU+) can be molded by qualified bootfitters.

LINERS

FIT IS KING

Whether it is working with Intuition®, the worldwide leader in after-market liners, or with our own proprietary liners, Roxa spares no effort to provide the best fit in the industry.



I.R. = Intuition / Roxa®

Custom produced by Intuition® specifically for Roxa, 100% Heat moldable, ultra-comfortable and lasting fit. Light weight and cozy warm.



I.R. Tongue Freeride, Freeski

Light, easy to fit and provide outstanding skiing as well as striding.



I.R. Wrap Freeride, Freeski

Outstanding custom fit combined with shock absorption and warmth.



I.R. Tongue All mountain high perf.

Provides outstanding foothold and 100% customized comfort.



Roxa Ultralon

Premium quality liners featuring Ultralon EVA Foam. The most sought after EVA used in ski boots. It offers the best molding qualities along with a lasting fit. Ultralon is also very light and warm.



Ultra -Thin active insulation Technology in all of our Biofit 4D & U75 R/Fit liners. 50% increase warmth, reflective aluminum membrane climate control, breathable and anti-bacterial.



4D Biofit All mountain high performance

Pre- molded 3D insert combined with Ultralon EVA Foam.

Now with Win-Therm insulation technology



U75 Freeski, Freeride, All-mountain

Utilize Ultralon in 75% of the liner (heel pocket and tongue)

Now with Win-Therm insulation technology



U50 Freeride, All-mountain

Utilize Ultralon in 50% of the liner (heel pocket)

LEGEND TECH ICONS



I.R. (INTUITION/ROXA) LINERS
 -Superior warmth comfort and durability
 -High performance, ultralight
 -Low pressure, full-contact fit
 -100% heat-moldable



ULTRALON FOAM
 Ultralon developed a high quality foam renowned for its superior thermoforming ability, high level of insulation and excellent durability.



GRILAMID INJECTION
 Grilamid is the state of the art in technical polymers. Lightweight, durable and unaffected by cold temperatures.



WIN THERM
 Ultra-Thin Insulation Technology in all of our Biofit 4D and U75 R/ Fit liners. 50% Increase warmth, reflective aluminum membrane climate control, breathable, anti-bacterial.



DYNAFIT BINDING / KINGPIN BINDING
 RX is certified for Dynafit and Marker Kingpin inserts personalizations and all tech insert equipped R3 models.



TRIDENT BI-INJECTED CUFF
 Powerful, highly anatomic and light weight cuff designed with bi-injected reinforcement in the spine and hinge interface areas for outstanding fit-to-strength ratio.



HEEL LOCK BUCKLE
 Independently functioning instep buckle is positioned at a 45° angle securing the heel during all phases of skiing and hiking.



OPTI LOCK INSTEP BUCKLE
 Two position buckle location allows for perfect instep fit and foot hold.



ADJ. FORWARD LEAN
 New aluminum shell insert can be exchanged with +2° insert. (spare part in box)



NEXT GEN CABRIO
 Use of advanced CAD Design technology, 3D Printed prototyping, and cutting edge ultralight polymers achieves minimal form with outstanding strength-to-weight ratio.



NEXT GEN OVERLAP
 New 2-piece ultralight overlap design provides power and precision. Use of advanced CAD Design technology, 3D Printed prototyping, power the evolution of the traditional "overlap" ski boot.



EASY STRIDE POWER STRAP BUCKLE
 Powerstrap allows for excellent boot top closure as well as accommodating any leg shape. Easy stride buckle function extends stride range when opened in the walk phase.



EASY SKI-HIKE LOCK
 The ski-hike cuff lock allows for easy striding when open and uncompromising performance when locked.



ERGONOMIC BUCKLE CABLE SYSTEM
 System adapts to the shape of the shell for perfect fit and minimal bulk or weight.



WOMEN'S SPECIFIC CUFF
 Women's specific upper cuff provides reduced height and "scalloped" shape to comfortably accommodate women's calve shapes.



D.R.I. CHASSIS TUNING
 The Dynamic Response Insert shortens range of flex while still providing excellent shock absorption. Lighthing quick response and power for outstanding all mountain performance.



C.A.C. ADJ CUFF
 Calf Adapt Cuff easily adjust to increase boot top circumference by 1.5 cm.



ADJUSTABLE FLEX
 The setting of "hard and soft" allows the skier to adjust the flex of the boot.



BIOFIT LAST
 Anatomic fit last with pre-formed relief in the most common fit "issue" areas – ankle, navicular, 1st metatarsal, 6th toe.



BIOFIT CM
 Offer the ability for a qualified ski shop bootfitter to mold the shell.



EASY ENTRY SYSTEM
 Soft polyurethane pannel insert at the instep allows for smooth, easy entry and exit.

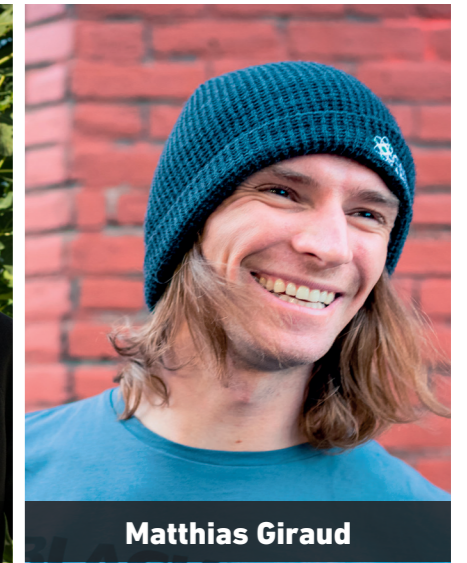
ROXA TEAM



Glen Plake



Maxime Chabloz



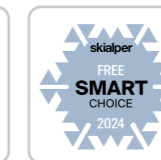
Matthias Giraud

The Roxa team is one of the most important pieces of the company's engine. In addition to being some of the world's most recognizable skiers, they also provide feedback, testing, and inspiration for the development of new products.

AND...
 Cody Wilder Ray | Lupe Hagearty
 Dean Bercovitch | Samuel Alander
 Ian Hamilton | Michael 'Bird' Shaffer

HOW THE WORLD SEES US

Roxa's products and skiers are setting new standards and climbing to new heights every season. Whether it is magazine test awards, top competition results or conquering the most challenging terrain in the world, Roxa is leading the charge.



RENTAL series

ROXA RTL FEATURES

Rental specific features to enhance guest experience and rental shop efficiency.



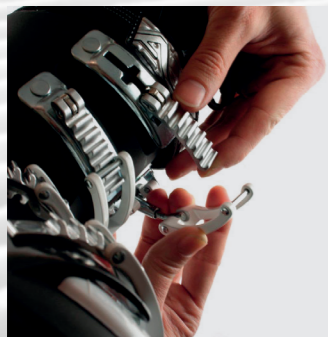
BAR CODE

Roxa products intended for rental provide a barcode and sizing information to assist in identification.



SANITIZED LINER

The boot is made with comfortable materials and underwent an antibacterial treatment.



ADJ. CUFF BUCKLES

Fast and easy macro adjust cuff buckle racks save times and allow easy fitting of any lower leg shape.



PU+ SHELL

Every Roxa rental boot specifically have a poliurethan shell, that provide outstanding performance and durability.



BLACK/CEMENT/GREEN

R/FIT MV 100 RTL

NEW

GW #530302
ALP # 530304

Trident Bi-injected Cuff - Opti-lock buckle - Barcode

ARCHITECTURE: Overlap - 2 Piece

CUFF: Fixed

MATERIAL: PU+ / PU+

BUCKLES: 4 Alu

LINER: 4D BioFit Rental / Sanitized®

SOLE: GripWalk / Alpine

BINDING SYSTEM: Alpine / GripWalk

LAST: 100 - 102 mm Biofit CM

SIZES: 24.5 - 30.5



BLACK/BLACK/ORANGE

R/FIT HIKE 90 RTL

GW #430303
ALP #430305

C.A.C. - Hike system - Barcode

ARCHITECTURE: Overlap - 2 Piece

CUFF: Ski hike

MATERIAL: PU+ / PU+

BUCKLES: 3 Alu

LINER: RTL Liner / Sanitized®

SOLE: GripWalk / Alpine

BINDING SYSTEM: Alpine / GripWalk

LAST: 102 - 104 mm Biofit CM

SIZES: 24.5 - 32.5



CEMENT/CEMENT/GREEN

R/FIT 90 RTL

GW #430307
ALP # 430309

C.A.C. - Barcode

ARCHITECTURE: Overlap - 2 piece

CUFF: Fixed

MATERIAL: PU+ / PU+

BUCKLES: 4 Alu

LINER: RTL Liner / Sanitized®

SOLE: GripWalk / Alpine

BINDING SYSTEM: Alpine / GripWalk

LAST: 102 - 104 mm Biofit CM

SIZES: 24.5 - 32.5





BLACK/BLACK/RED

Flex 80

R/FIT 80 RTL

GW #430311
ALP #430313

Barcode - Easy Entry

ARCHITECTURE: Overlap - 2 piece
CUFF: Fixed
MATERIAL: PU+ / PP+
BUCKLES: 4 Alu

LINER: RTL Liner / Sanitized®
SOLE: GripWalk / Alpine
BINDING SYSTEM: Alpine / GripWalk
LAST: 102 - 104 mm Biofit CM
SIZES: 24.5 - 32.5



BIOFIT CM EASY-ENTRY SYSTEM GRIPWALK

WOMENS



BLACK/CEMENT/AQUA

Flex 85

R/FIT MV 85 W RTL

NEW

GW #530412
ALP #530414

Trident Bi-injected Cuff - Opti-lock buckle - Women's Specific Cuff - Barcode

ARCHITECTURE: Overlap - 2 piece
CUFF: Fixed
MATERIAL: PU+ / PU+
BUCKLES: 4 Alu

LINER: 4D BioFit Rental W / Sanitized®
SOLE: Gripwalk / Alpine
BINDING SYSTEM: Alpine / GripWalk
LAST: 100 - 102 mm Biofit CM
SIZES: 22.5 - 27.5



BIOFIT CM EASY-ENTRY SYSTEM OPTI LOCK TRIDENT BI-INJECTED CUFF WOMEN'S SPECIFIC CUFF GRIPWALK

R/FIT HIKE 85 W RTL

GW #430413
ALP #430415

Barcode - C.A.C. - Women's Specific Cuff - Hike System

ARCHITECTURE: Overlap - 2 piece
CUFF: Ski Hike
MATERIAL: PU+ / PU+
BUCKLES: 3 Alu

LINER: RTL Liner W / Sanitized®
SOLE: GripWalk / Alpine
BINDING SYSTEM: Alpine / GripWalk
LAST: 102 - 104 mm Biofit CM
SIZES: 22.5 - 27.5



BIOFIT CM EASY-ENTRY SYSTEM EASY SKI-HIKE CUFF C.A.C. ADJ CUFF WOMEN SPECIFIC CUFF GRIPWALK



BLACK/BLACK/PLUM

Flex 85



LT GREY/LT GREY/PLUM

Flex 85

R/FIT 85 W RTL

GW #430417
ALP #430419

Barcode - C.A.C. - Women's Specific Cuff

ARCHITECTURE: Overlap - 2 piece
CUFF: Fixed
MATERIAL: PU+ / PU+
BUCKLES: 4 Alu
LINER: RTL Liner W / Sanitized®

SOLE: GripWalk / Alpine
BINDING SYSTEM: Alpine / GripWalk
LAST: 102 - 104 mm Biofit CM
SIZES: 22.5 - 27.5



EASY-ENTRY SYSTEM BIOFIT CM WOMEN SPECIFIC CUFF C.A.C. ADJ CUFF GRIPWALK

R/FIT 75 W RTL

GW #430421
ALP #430423

Barcode - Easy Entry - Women's Specific Cuff

ARCHITECTURE: Overlap - 2 piece
CUFF: Fixed
MATERIAL: PU+ / PP+
BUCKLES: 4 Alu
LINER: RTL Liner W / Sanitized®

SOLE: GripWalk / Alpine
BINDING SYSTEM: Alpine / GripWalk
LAST: 102 - 104 mm Biofit CM
SIZES: 22.5 - 27.5



EASY-ENTRY SYSTEM BIOFIT CM WOMEN SPECIFIC CUFF GRIPWALK



BLACK/BLACK/MINT

Flex 75

JUNIOR



BLACK/ BLACK/ BLACK

RAVEN 4-3 RTL

4: ITEM #330553
3: ITEM #330557

ARCHITECTURE: Overlap - 2 Piece
CUFF: Fixed
MATERIAL: PU+ / PP+
BUCKLES: 4-3 Alu

LINER: Junior Comfort
SOLE: Alpine
BINDING SYSTEM: Alpine / GripWalk
SIZES: 22.5 - 26.5

RAVEN 2-1 RTL

2: ITEM #330551
1: ITEM #330555

ARCHITECTURE: Cabrio - 3 piece
CUFF: Fixed
MATERIAL: PU / PP
BUCKLES: 2-1 Alu

LINER: Junior Comfort
SOLE: Alpine
BINDING SYSTEM: Alpine / GripWalk
SIZES: 2 Buckle: 19.5 - 21.5
1 Buckle: 14.5 - 18.5



BLACK/ BLACK/ BLACK

AFTERMARKET ACCESSORIES

SOLES

All Roxa R3 and R/Fit models have interchangeable soles.



VIBRAM® SOLE

Vibram® rubber AT Norm soles provide superior traction and durability.

Available in:

All R3 and R3 W T1 models
(AT binding compatible only)



ALPINE SOLE

Classic "DIN" alpine replacement soles.

Compatible with:

R3 Element
R/Fit MV R/Fit



GRIPWALK® SOLE

Bi-Injected rockered soles make walking easy without compromising binding performance (GripWalk bindings)

Compatible with:

R3 Element
R/Fit MV R/Fit



GRIPWALK® JUNIOR

GripWalk soles developed for junior ski boot dimensions (up to size 21.5)

Compatible with:

Lazer, Bliss, Raven 1 e 2

TONGUES



DUAL TONGUE

2-Piece hinged dual-tongue.

Available in 3 stiffness's (A, B, C) only as aftermarket.

Compatible with:

R3 Element



R3 TONGUE

One piece nylon tongue available only in black.

Available in 4 stiffness's (A, B, C, D) only as aftermarket.

Compatible with:

R3 Element

SIZE CHART

ADULTS

| | | SIZE CONVERSION | | | | | | | | | | | | | | | | | | | | | |
|--------------|--|------------------|------|-----|------|----|------|-----|------|-----|------|-----|------|-----|------|-----|------|-----|------|-----|------|-----|-----|
| EUROPE | | 35 | 36 | 36½ | 37 | 38 | 38½ | 39 | 40 | 40½ | 41 | 42 | 42½ | 43 | 44 | 44½ | 45 | 45½ | 46 | 47 | 47½ | 48 | 48½ |
| UK | | 3 | 3½ | 4 | 4½ | 5 | 5½ | 6 | 6½ | 7 | 7½ | 8 | 8½ | 9 | 9½ | 10 | 10½ | 11 | 11½ | 12 | 12½ | 13 | 13½ |
| USA m. | | 4 | 4½ | 5 | 5½ | 6 | 6½ | 7 | 7½ | 8 | 8½ | 9 | 9½ | 10 | 10½ | 11 | 11½ | 12 | 12½ | 13 | 13½ | 14 | 14½ |
| USA w. | | 5 | 5½ | 6 | 6½ | 7 | 7½ | 8 | 8½ | 9 | 9½ | 10 | 10½ | 11 | 11½ | 12 | 12½ | 13 | 13½ | 14 | 14½ | 15 | 15½ |
| MONDO P. | | 22 | 22.5 | 23 | 23.5 | 24 | 24.5 | 25 | 25.5 | 26 | 26.5 | 27 | 27.5 | 28 | 28.5 | 29 | 29.5 | 30 | 30.5 | 31 | 31.5 | 32 | 32½ |
| | | BOOT SOLE LENGTH | | | | | | | | | | | | | | | | | | | | | |
| RX | | | | | | | 269 | 279 | | 289 | | 299 | | 309 | | 319 | | 329 | | | | | |
| RX W | | | 249 | | 259 | | 269 | 279 | | 289 | | 299 | | | | | | | | | | | |
| R3 | | | | | | | 280 | 290 | | 300 | | 310 | | 320 | | 330 | | 340 | | | | | |
| R3 W | | | 262 | | 270 | | 280 | 290 | | 300 | | 310 | | | | | | | | | | | |
| ELEMENT | | | | | | | 280 | 290 | | 300 | | 310 | | 320 | | 330 | | 340 | | | | | |
| ELEMENT W | | | 262 | | 270 | | 280 | 290 | | 300 | | 310 | | | | | | | | | | | |
| R/FIT MV | | | | | | | 280 | 290 | | 300 | | 310 | | 320 | | 330 | | 340 | | | | | |
| R/FIT MV W | | | 262 | | 270 | | 280 | 290 | | 300 | | 310 | | | | | | | | | | | |
| R/FIT | | | | | | | 280 | 290 | | 300 | | 310 | | 320 | | 330 | | 340 | | 360 | | 360 | |
| R/FIT W | | | 262 | | 270 | | 280 | 290 | | 300 | | 310 | | | | | | | | | | | |
| R/FIT HIKE | | | | | | | 280 | 290 | | 300 | | 310 | | 320 | | 330 | | 340 | | 360 | | 360 | |
| R/FIT HIKE W | | | 262 | | 270 | | 280 | 290 | | 300 | | 310 | | | | | | | | | | | |

KIDS

| | | SIZE CONVERSION | | | | | | | | | | | | |
|-------------|--|------------------|------|------|------|------|------|------|------|------|------|------|------|------|
| EUROPE | | 24 | 25 | 26½ | 28 | 29 | 30½ | 32 | 34 | 36 | 37 | 38½ | 40 | 41 |
| UK | | 3 | 3½ | 4 | 4½ | 5 | 5½ | 1 | 2 | 3 | 4½ | 6 | 7 | 8 |
| USA kids | | 6 | 7 | 8 | 9 | 11 | 12 | 1½ | 2½ | 3½ | 5½ | 6½ | 7½ | 8½ |
| MONDO POINT | | 14.5 | 15.5 | 16.5 | 17.5 | 18.5 | 19.5 | 20.5 | 21.5 | 22.5 | 23.5 | 24.5 | 25.5 | 26.5 |
| | | BOOT SOLE LENGTH | | | | | | | | | | | | |
| R/FIT J 70 | | | | | | | | | | 262 | 270 | 280 | 290 | 300 |
| LAZER | | 202 | 202 | 202 | 222 | 222 | 242 | 242 | 262 | 262 | 270 | 280 | 290 | 300 |
| BLISS | | 202 | 202 | 202 | 222 | 222 | 242 | 242 | 262 | 262 | 270 | 280 | 290 | 300 |
| RAVEN | | 202 | 202 | 202 | 222 | 222 | 242 | 242 | 262 | 262 | 270 | 280 | 290 | 300 |
| CHAMELEON | | | | | | 2 | 2 | 2 | 2 | 3 | 3 | 3 | 3 | |

The data in this catalogue is for your information only. Rocca Group could make changes at any time on any model in the catalogue due to technical or commercial reasons.

ANDORRA
SUNSET SPORT
475 ROUTE DE LA DRANSE,
AMPHION 74500 - FRANCE
Tel: +33 450 717723
Email: contact@sunset-sport.fr
Web: www.sunset-sport.fr

ARGENTINA
VERTICAL SKI & SNOWBOARD
ALVEAR 84, CORDOBA, 5000
-ARGENTINA
Tel: +54 351 6837770
Email: maximaderna2085@gmail.com
Web: www.verticalskisnowboard.com

ARMENIA
KANT LLC
ELEKTROLITNIJ 7,
BLD.2.FLOOR 2, ROOM 3
MOSCOW 115230 - RUSSIA
Tel: +7 (495) 6041021
Email: a.titorenko@kant.ru
Web: www.kant.ru

AUSTRALIA
SKIERS JUNCTION PTY LTD
PO BOX 294
3228 TOROUAY VICTORIA - AUSTRALIA
Tel: +61 417570915
E-mail: nick@skiersjunction.com
Web: skiersjunction.com

AUSTRIA
ELAN CENTRAL EUROPE GMBH
ASCHHEIMER STRASSE 13
FELDKIRCHEN 85622 - GERMANY
Tel: +49 89 4271760
Fax: +49 89 42717666
E-mail: rhofer@elan-austria.at

BELARUS
BELADVA LTD
2ND SHESTAJA LINE ST. 11-15A
MINSK 220013 - BELARUS
Tel: +375 179202456
Email: a.damashevich@beladva.com
Web: www.beladva.com

BENELUX
KUBUS SPORTS B.V.
WATERGOORWEG 79
NIJKERK 3861MA - THE NETHERLANDS
Tel: +31 356954695
Fax: +31 356954690
E-mail: ralf@kubus-sports.nl

BOSNIA AND HERZEGOVINA
PLANET BIKE CO.
VOJVODE STEPE STEPANOVIKA B.B.
PRIJEDOR 79000 - BOSNIA
Tel: +387 52224950
E-mail: planetb@teol.net

BULGARIA
NAMASTE LTD
ARCH. MILANOV STR. 26/B
1164 SOFIA - BULGARIA
Tel: +35 9888141046
E-mail: info@namaste-bg.com
Web: www.namaste-bg.com

CANADA
ELAN SPORTS INC
845B TECUMSEH ST.
H9R1A1 DOLLARD DES ORMEAUX - CANADA
Tel: +1 5144217871
Email: primoz.plestenjak@elansports.ca
Web: www.elansports.ca

CHILE
TURISMOG EXPEDICIONES AGUAVENTURA
PALGUIN 336,
PUCON 4920000 - CHILE
Tel: +56 998474152
E-mail: sebastien@aguaventura.com
Web: www.aguaventura.com

CHINA
BEIJING SNOW ELAN SPORTS
DEVELOPMENT LTD.CO
0112 TO 126 OFFICES, 112# ANDELU ROAD
XICHENG, BEIJING 100120 - CHINA
Tel: +86 10 88371007, 88556083
Fax: +86 10 88371009
E-mail: snowturbo@126.com
Web: www.chinaski.com.cn

CROATIA
ELAN D.O.O.
BEGUNJE 1
BEGUNJE NA GORENJSKEM 4275 - SLOVENIA
Tel: +386 45351429
Fax: +386 45351444
E-mail: bostjan.gaspersic@elan.si

CYPRUS
4S DISTRIBUTION I.K.E.
AGAMEMNONOS 11
15235 VRILISSIA - GREECE
Tel: +30 2106858021
E-mail: info@4sdistribution.gr
Web: www.4sdistribution.gr

CZECH REPUBLIC
INA SPORT SPOL. S R.O.
DUSIKOVA 3
BRNO 63800 - CZECH REPUBLIC
Tel: +420 545422431
E-mail: david.holik@inasport.cz
Web: www.inasport.cz

DENMARK
SNOWBIZ AS
KJELLSTADVEIEN 5
N-3402 LIER - NORWAY
Tel: +47 67162040
Fax: +47 67162041
E-mail: peter@snowbiz.no
Web: www.snowbiz.no

ESTONIA
KARUSPORT OÜ
MADARA 22
10613 TALLINN - ESTONIA
Tel: (+372) 50 43 253
Email: info@karusport.com
Web: www.karusport.com

FRANCE
SUNSET SPORT
475 ROUTE DE LA DRANSE
AMPHION 74500 - FRANCE
Tel: +33 450 717723
Email: contact@sunset-sport.fr
Web: www.sunset-sport.fr

FINLAND
NEONSUN OY
PUUSEOPANKATU 5
HAMENLINNA 13130 - FINLAND
Tel: +35 836127222
Fax: +35 836127232
E-mail: neonsun@neonsun.fi
Web: www.neonsun.fi

GEORGIA
MOGZAURI LTD.
VAJA - PSHAVELA AV.6TH BLOCK,
10TH. BUILD APP36
0186 TBILISI - GEORGIA
Tel: +99 5595565565
E-mail: info@mogzauri.ge
Web: www.mogzauri.ge

GERMANY
ELAN CENTRAL EUROPE GMBH
ASCHHEIMER STRASSE 13
FELDKIRCHEN 85622 - GERMANY
Tel: +49 89 4271760
Fax: +49 89 42717666
E-mail: info@elan-sport.eu

GREAT BRITAIN
SUNSET SPORT
475 ROUTE DE LA DRANSE,
AMPHION 74500 - FRANCE
Tel: +33 450 717723
Email: contact@sunset-sport.fr
Web: www.sunset-sport.fr

GREECE
4S DISTRIBUTION I.K.E.
AGAMEMNONOS 11
15235 VRILISSIA - GREECE
Tel: +30 2106858021
E-mail: info@4sdistribution.gr
Web: www.4sdistribution.gr

GREENLAND
PIKKORI SPORT A/S
AQQUSINERSUAQ, 4 BOX 160
NUUK 3900 - GREENLAND
Tel: +299 321888
Email: butik@pikkori.com

HUNGARY
INA SPORT SPOL. S R.O.
DUSIKOVA 3
BRNO 63800 - CZECH REPUBLIC
Tel: +420 545422431
E-mail: david.holik@inasport.cz
Web: www.inasport.cz

IRAN
MEHDI ROSTAMI
NO 10 KAVE MALL MONIRIYEH SQUARE
TEHRAN - IRAN
Tel: +98 9122300305
Fax: +98 2166461745
E-mail: mehdi.sport.sport@gmail.com

ITALY
ROCCA GROUP SRL
VIA G. GALILEI 58 31011
ASOLO TV - ITALY
Tel: +39 0423 55621
Fax: +39 0423 950410
Email: info@roxa.com
Web: www.roxa.com

JAPAN
ELAN JAPAN Co. Ltd.
3-3-4 KANDAMISAKI-CHO, TOMOE BLDG 2F
101-0061 TOKYO - JAPAN
Tel: +81 362729016
Fax: +81 362729018
Email: side@elanjapan.co.jp
Web: www.elanjapan.co.jp

KAZAKHSTAN
KANT LLC
ELEKTROLITNIJ 7,
BLD.2.FLOOR 2, ROOM 3
MOSCOW 115230 - RUSSIA
Tel: +7 (495) 6041021
Email: a.titorenko@kant.ru
Web: www.kant.ru

LEBANON
BAZAR KASLIK
SARBA HIGHWAY, SUCCAR BUILDING
JOUNIEH - LIBAN
Tel: +96 13 90 3197
Fax: +96 19 64 3768
E-mail: freestyle_tbs@hotmail.com

LIECHTENSTEIN
ELAN SWITZERLAND GmbH
WIE SENTALSTRASSE 1
REBSTEIN 9445 - SWITZERLAND
Tel: +41 79 56 92820
E-mail: gerhard.haemmerle@elan-sport.ch

LITHUANIA
EFEKTO UAB
UKMERGES 298
VILNIUS 06143 - LITHUANIA
Tel: +370 64149470
E-mail: info@efekto.lt
Web: www.efekto.lt

MONTENEGRO
PLANET BIKE CO. D.O.O.
LYUBICE IVOSEVIC 53
BELGRADO 11000 - SERBIA
Tel: +381 113121151
E-mail: sinisa.zivkovic@planetbike.rs
Web: www.planetbike.rs

NEW ZEALAND
KAIMAI SPORTS LTD
263A RUAHIHI ROAD R.D.1.
3171 TAURANGA - NEW ZEALAND
Tel: +64 21464876
E-mail: paul@kaimaisports.co.nz

NORWAY
SNOWBIZ AS
KJELLSTADVEIEN 5
N-3402 LIER - NORWAY
Tel: +47 67162040
Fax: +47 67162041
E-mail: peter@snowbiz.no
Web: www.snowbiz.no

POLAND
INA SPORT SPOL. S R.O.
DUSIKOVA 3
BRNO 63800 - CZECH REPUBLIC
Tel: +48 696597073
E-mail: dagmara.krzyzynska@inasport.pl
Web: www.inasport.pl

ROMANIA
RASPORT
AUREL VLAICU 1
CLUJ 400690 - ROMANIA
Tel: +40 746151229
Email: raul@rasport.ro

RUSSIA
KANT LLC
ELEKTROLITNIJ 7,
BLD.2.FLOOR 2, ROOM 3
MOSCOW 115230 - RUSSIA
Tel: +7 (495) 6041021
Email: a.titorenko@kant.ru
Web: www.kant.ru

SERBIA
PLANET BIKE CO. D.O.O.
LYUBICE IVOSEVIC 53
BELGRADO 11000 - SERBIA
Tel: +381 113121151
E-mail: sinisa.zivkovic@planetbike.rs
Web: www.planetbike.rs

SLOVAKIA
INA SPORT SPOL. S R.O.
DUSIKOVA 3
BRNO 63800 - CZECH REPUBLIC
Tel: +421 905669710
E-mail: jan.devecka@inasport.sk
Web: www.inasport.sk

SLOVENIA
ELAN D.O.O.
BEGUNJE 1
BEGUNJE NA GORENJSKEM 4275 - SLOVENIA
Tel: +386 45351429
Fax: +386 45351444
E-mail: bostjan.gaspersic@elan.si

SPAIN
SUNSET SPORT
475 ROUTE DE LA DRANSE,
AMPHION 74500 - FRANCE
Tel: +33 450 717723
Email: contact@sunset-sport.fr
Web: www.sunset-sport.fr

SWEDEN
WANERSTEDT AB
JARNVAGSGATAN 25
53332 GOTENE SWEDEN
Tel: +46 51151788
E-mail: info@wanerstedt.se
Web: www.wanerstedt.se

SWITZERLAND
ELAN SWITZERLAND GmbH
WIE SENTALSTRASSE 1
REBSTEIN 9445 - SWITZERLAND
Tel: +41 79 56 92820
E-mail: gerhard.haemmerle@elan-sport.ch

TURKEY
KAR SPOR
KEMANKES KARAMUSTAFI PASA MAH.
NECATI BEY CAD. GOKCE HAN NO:16 KAT:7
34425 BEYOGLU/ISTANBUL TURKEY
Tel: +0090 4422351616
E-mail: vasfi@saassports.com
Web: https://www.karspor.com.tr/

UKRAINE
BOOMERANG DIST.
KZELENA ST. 95/4
LVIV 79000 - UKRAINE
Tel: +38 0676700104
E-mail: dist@boomerang-boardshop.ua
Web: www.boomerang-boardshop.ua.

USA
ROXA SPORTS INC
16 CELINA AVE. / UNIT 3
NASHUA, NH 03063 - USA
Tel: +1 6032393800
E-mail: info@roxasports.com
Web: www.roxa.com

**SALES & SUPPORT NETWORK
FIND US AROUND THE WORLD**

ROCCA GROUP S.r.l.
Via Galileo Galilei, 58
31011 Asolo (TV) - ITALY
Tel: +39 0423 55621
Mail: info@roxa.com

ROXA.COM

